

Landscapes & Geosites

The Witchelina-Old Mt Nor'West Gorge drive circumnavigates the spectacular Twenty Mile Hill range; a landscape of oddly curved and linear ridges and valleys with one tortuous but magnificent section cutting across these through the eerily tight gorge. It reveals an unusual variety of geosites comprising both stunning and enigmatic rocks and landforms ending with a drive through the heart of the awesome and unique Witchelina Diapir.

1. Quartz Chips. The track at first climbs out of Station Creek which flows southeast out of the ranges. At the junction where it turns north a strewn field of sparkling white quartz chip gibbers indicates a close proximity to the major West Willouran Fault which we cross, but cannot see, a few 100 metres along the track

2. The Embankment is an unusual flat-topped ridge which rises spectacularly about 3-4metres above the valley floor. It looks man-made but is a natural feature formed by a hard flaggy quartzite unit. Steep bedding planes reveal delicately rippled surfaces and vivid white quartz vein gashes.



3. The Old Mt Nor'West Gorge entrance is at a sharp 90 degree bend in the creek caused by impressive walls of quartzite which flanks either side. The "track" follows the gorge along exposed quartzite bedrock.

Individual beds of massive rusty brown, red, grey and cream sandstone alternate with more flaggy siltstones, each getting younger downstream to the NE.



4. Broken Rock Wall is seen looking back along the gorge. Intense jointing fragments and tessellates rock .



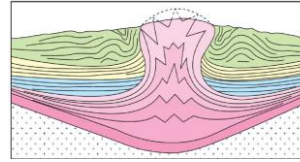
5. Rippled Rock is just one of many magnificent quartzite bedding surfaces. Some 750 million years ago this slab of sandy rock was part of a shallow water beach, but there were no creatures alive on earth then to leave their tracks and traces in the sand.

6. Layers of the Earth viewing point. Here the geological cycles, processes and features through which you've just been driving are all brought together in one dramatic display



7. Faulted Rock Gorge. Is a buttressed creek crossing and waterhole where two major faults converge to intensely fracture the quartzites caught between them.

8 Diapiric Megabreccia occurs in this part of the Witchelina Diapir where low density salt and mud sediments rose up by gravity through the strata, fracturing and mixing the broken blocks as they rose.



9. Spring Gully gorge is a gentle walk across the boundary of the Witchelina Diapir back to the quartzite bastions of 20 Mile Hill

10. Dolomite Megabreccia is another mélange of broken and fractured creamy dolostone leading to spectacular views of the homestead from Sundowner Hill

Total distance: Approx. 32 kms round trip, 6-7 hours.
Difficulty: Easy, with one difficult section
Basic signs As you drive, you'll see signs:



- shows the direction to follow for the Witchelina-Old Mt Nor'West Gorge loop Nature Drive.



- Geosite of particular geological interest. *Please note: fossicking on Witchelina is prohibited.*



- Landscape site/feature where you may wish to stop.

The Witchelina-Old Mt Nor'West Gorge loop Nature Drive is only suitable for 4WD vehicles and is safe to travel only during daylight hours. Please begin your drive before 10.00am. Signs clearly show your route, please do not leave the marked track.



Witchelina-Old Mt Nor'West Gorge Loop Nature Drive





Old Mt Nor'West Homestead

Quartz Chips & Pebbles



Old Mt Nor'West Gorge

5. Rippled Rocks

6. "Layers of the Earth" Rapids

3. Old Mt Nor'West Gorge Entrance

4. Broken Rock Wall

7. Faulted Rock Gorge

8. Diapiric Megabreccia

2. The Embankment



Twenty Mile Hill

9. Spring Gully Gorge

Spring Well & Tank

Delusion Hill



West Willouran Fault

1. Quartz Chips & Pebbles

Witchelina Diapir



10. Dolomite Megabreccia



Drive Starts and Ends Here

Homestead

